

What is the Flat Bed Verifier?

The Flat Bed Verifier is designed to ISO grade most 1D & 2D bar codes on various label sizes and finished products with flat or rounded sides. The Flat Bed Verifier Boasts a massive 6" x 4" Field of View on the optional High Density unit.

The LVS Flat Bed Verifier is connected to a customer supplied PC via a USB cable and is designed to fully comply with the ISO/IEC Standards. Place a bar code on the viewing stage and software does the rest. A NIST Traceable Calibrated Conformance test card is used for calibration.

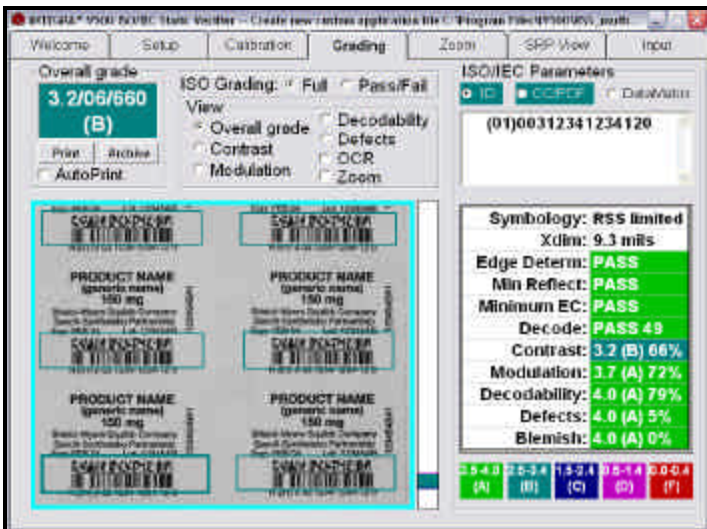
Designed for Different Applications

There are five different models. Each designed to accommodate your needs for a different field of view with respect to the Narrow Bar Width (NBW) or cell size.

Model	Max BC Width	NBW - Cell	
		1D	2D
LVS9505-LD-AA	Lens Specific	Contact Sales	Contact Sales
LVS9505-HD-AA	Lens Specific	Contact Sales	Contact Sales

The Flat Bed Verifier Package

Flat Bed Verification unit includes, INTEGRA 9500 software bundle with security dongle, GS1 Calibration card, USB Cable, INTEGRA 9500 Software Manual.



Warranty

Label Vision Systems, Inc. is pleased to offer a full one year Return to Base warranty on all labor and materials for LVS products.

Label Vision Systems will provide telephone support (5) five days a week 9 a.m. to 4 p.m. EST.

Camera

Monochrome Camera
2.1 Mega-pixel or 1.3 Mega-pixel

Light Source

White light
Narrow band pass interference filter
12 vdc @ 1.6 A

Inputs / Outputs

USB 2.0 port
12 vdc @ 1.6 A

Operating Temperature

10° C (50°F) to 30° C (86°F)

Relative Humidity

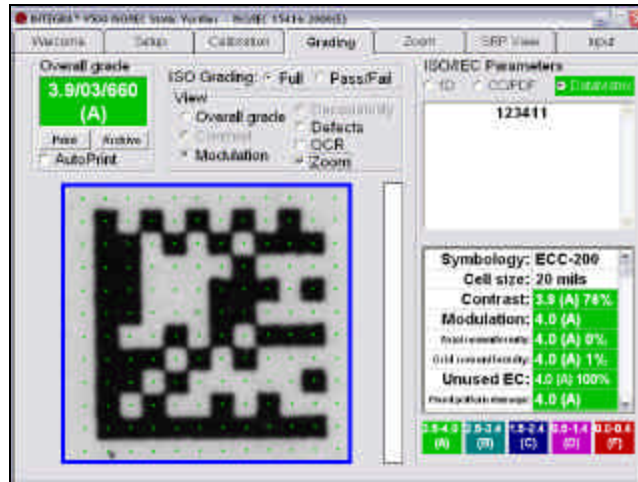
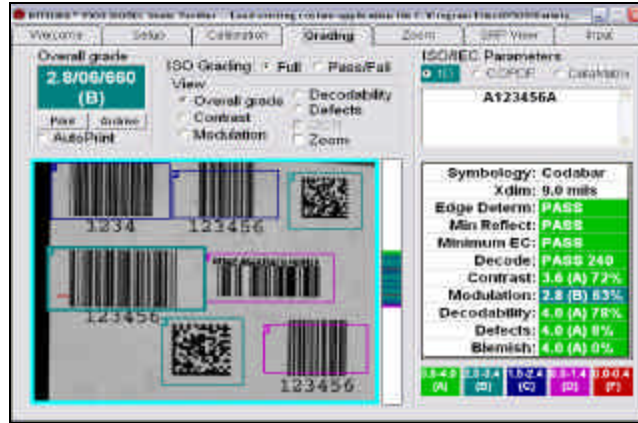
20% to 70% (non condensing)

Storage Temperature

0° C (32°F) to 40° C (104°F)

Physical Properties

D = 432mm (17in)
W = 324mm (12.75in)
H = 463mm (18.25in)
Weight = 12.5 kg (27.5lbs)



Supported Symbolologies

Code 39
ITF (1 of 5)
UCC/EAN-128
Code 128
Codabar
UPC-A
Code 93
UPC-E
EAN-8
EAN-13
GS1 DataBar Omnidirectional
GS1 DataBar Stacked Omnidirectional
GS1 DataBar Limited
GS1 DataBar Expanded
GS1 DataBar Truncated
GS1 DataBar Stacked
GS1 DataBar Expanded Stacked
PDF 417
MSI Plessey
MicroPDF 417
Laetus Pharmacode
Composite Code CC-A
Composite Code CC-B
Composite Code CC-C
DataMatrix (ECC-200)

Supported Standards

CONFORMANCE STANDARDS:

ISO/IEC 15415:2000(E)
ISO/IEC 15416:2000(E)
ISO/IEC 15426-1:2000(E)
ISO/IEC 15426-2:2004(E)

APPLICATION STANDARDS:

GS1 General Specifications
MIL-STD-130M
AS9132-A /AIM DPM Cat 0
Laetus Pharmacode
Laetus Standard
Laetus Miniature Pharmacode
ISO/IEC 15415/15416
DHL
ALDI
PZN (big, normal, small)
MultiRotation Data Matrix
GS1 Report
Italian Pharmacode

PC Requirements

Minimum PC Requirements:
Windows XP Professional
Intel Celeron 2.4 Ghz
512 MB RAM (1GIG recommended)
40 GB HDD
800x600 resolution
USB 2.0 (2)